

Freo Freestanding Vanity Stone Top



Product Specifications



Pictured: Freo Vanity, V-groove panel profile, American Oak Light, Quantum Quartz Alpine White Stone Top
Available in Rattan and Shaker Profiles also

Standard sizes (L/W/H)

1200 × 500 × 770

(2 drawer, 2 door unit – single basin)

1500 × 500 × 770

(2 drawer, 2 door unit – single or double basin)

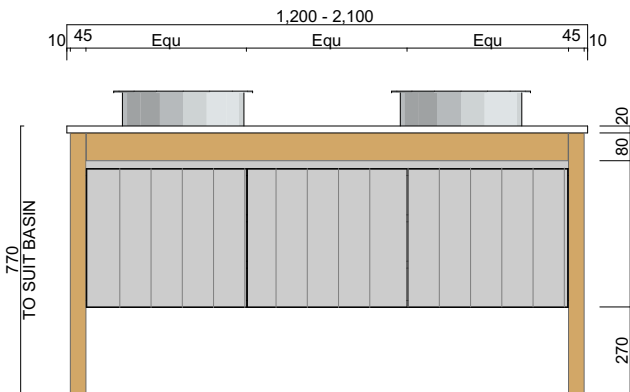
1800 × 500 × 770

(2 drawer, 2 door unit – single or double basin)

2100 × 500 × 770

(2 drawer, 2 door unit – single or double basin)

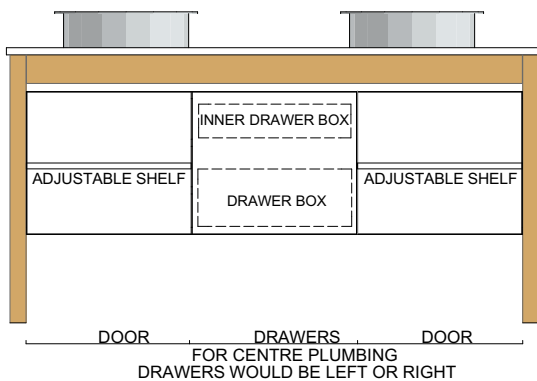
Front view



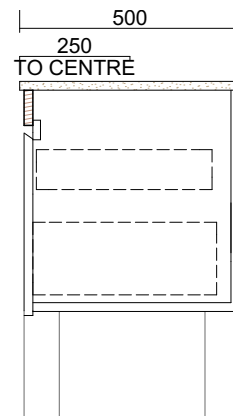
Plumbing location

	1200	1500	1800	2100
Centre	600	750	900	1050
Left/Right	300	375	450	525

Front Section



Section



Freo Single Freestanding Vanity Stone Top



Product Specifications



Pictured: Freo Vanity, V-groove panel profile, American Oak Light, Quantum Quartz Alpine White Stone Top
Available in Rattan and Shaker Profiles also

Standard sizes (L/W/H)

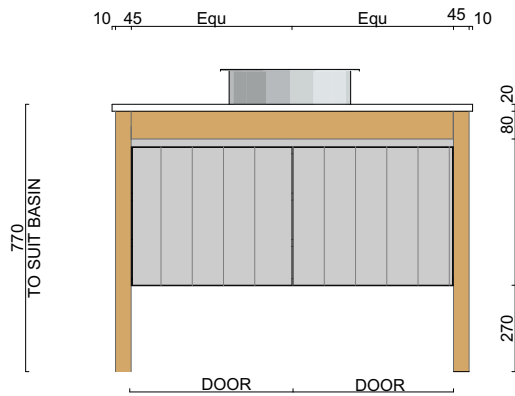
750 x 500 x 770

(2 door unit – single basin)

900 x 500 x 770

(2 door unit – single basin)

Front view



Plumbing location

	750	900
Centre	375	450

Front Section

